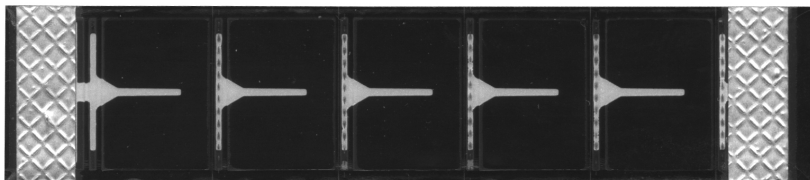
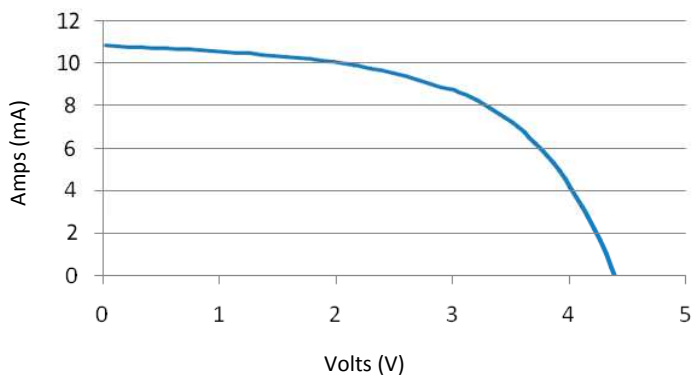


SP3-12



© 2013 FlexSolarCells

100% Sun - **STC, AM 1.5



ELECTRICAL

PARAMETER	VALUE	UNIT
Wattage	0.0255	W
Voltage	3.0	V
Voltage (oc)	4.5	V
Current	8.5	mA
Current (sc)	10.7	mA

MECHANICAL

PARAMETER	VALUE	UNIT
Height	0.2 (8)	mm (mils)
Length x Width	12.7 x 64 (0.5 x 2.5)	mm (inches)
Aperture Size	12.7 x 50.8 (0.5 x 2.0)	mm (inches)
Weight	0.24 (0.012)	g (oz)

Encapsulation	Polyester
Average Lifetime Flexions	3,000
*Average Outdoor Lifespan	6-12 Months

OPERATIONAL

**STC - (Standard Test Conditions) 1,000W/m ² , AM 1.5, 25°C Cell Temperature	
Temperature Departure of Isc	0.07%/K (3.6 mA/K)
Temperature Departure of Voc	-0.26%/K (-57 mV/K)
Temperature Departure of Pmax	-0.19%/K (-110.4 mW/K)
Temperature Departure of Imp	0.07%/K (2.4 mA/K)
Temperature Departure of Vmp	-0.24%/K (-41 mV/K)

NOTES

- *Average Outdoor Lifespan based on the absence of additional shielding or protection.
- During first 8-10 weeks of operation, electrical output may exceed specified ratings.
- Electrical specifications are based on measurements performed at **STC after stabilization.
- Performance may vary from rated power due to temperature and/or spectral fluctuations.

REV.	MODIF.	DATE	DRAW	APPROVE	ECN. No.
V1.0	FIRST ISSUE	9/11/2013	F. Meitzen	R.Anastasi	

Part Name	SP3-12	中国语文 http://www.rourentaiyangneng.com
		Deutsch http://www.flexiblesolarzellen.com
Part Number	F100	Español http://www.celdassolaresflexibles.com
		Française http://www.panneauxsolairesflexibles.com



WWW.FLEXSOLARCELLS.COM

General Inquires: info@flexsolarcells.com

Sales Inquires: sales@flexsolarcells.com